

# MISCELLANEOUS

- Total value of building approvals issued in September quarter 2010 decreased by 27.0% when compared to September quarter 2009. For the same period the total number of building permits issued decreased by 22.7%.

- Residential buildings contributed 72.7% in the total value of building approvals averaging to over \$140,000 per residential building approved. The commercial buildings contributed 27.3%.

- Electricity generated for the Cook Islands in this quarter was 8.4 million kWh, an increase of 0.1 million kWh when compared to the previous quarter and an increase of 0.4 million kWh when compared to September quarter last year.

- 85.4% of the total electricity generated in the Cook Islands was consumed on Rarotonga for this quarter followed by Aitutaki with 9.8%.

- Total newly registered vehicles recorded for September quarter 2010 was 212, an increase by 37 vehicles compared to the previous quarter and a further increase of 54 vehicles when compared to September quarter last year.

- Motor cycles continues to be the largest type of vehicles registered with 68.9%, followed by Cars, Jeeps & Station Wagons with 20.3% and Vans & Pickups with 6.6%.

- The number of international flights out of Rarotonga increased in this quarter by 13 flights when compared to previous quarter, and it further increased by 12 flights when compared to this time last year.

- New Zealand continued to be the main destination for our international flights with 183 flights, followed by Tahiti and Los Angeles with 13 flights each and Sydney with 12 flights.

## Other Miscellaneous statistics

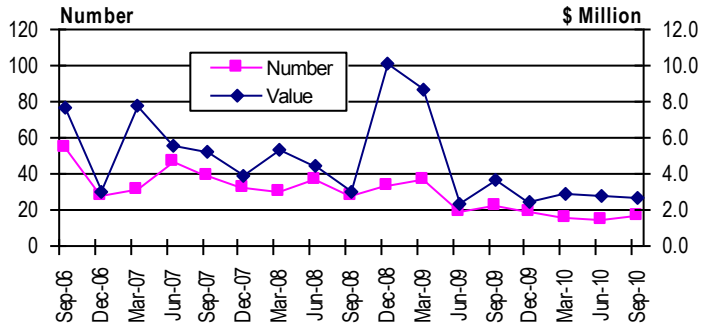
### Air Cargo

- The total weight of 325,000 kilograms of air cargo was recorded this quarter. This is an increase of 7,000 kilograms when compared to the previous quarter. 35,000 kilograms of air cargo export was recorded for this quarter up by 5,000 kilograms when compared to the previous quarter and an increase of 20,000 kilograms when compared to September quarter last year. The actual value and descriptions of the air cargo imports/exports will be captured in the International trade section.

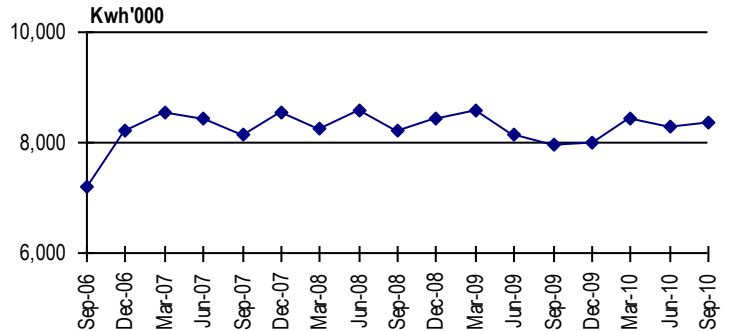
### Climate

- Rarotonga and Aitutaki recorded an average temperature of 23.0 and 25.1 degrees Celsius respectively with a total rainfall of 217 millimeters for Rarotonga and 216 millimeters for Aitutaki. Penrhyn had an average temperature of 28.4 degrees Celsius with a total rainfall of 439 millimeters during this quarter. A total of 620 hours of sunshine was recorded for Rarotonga.

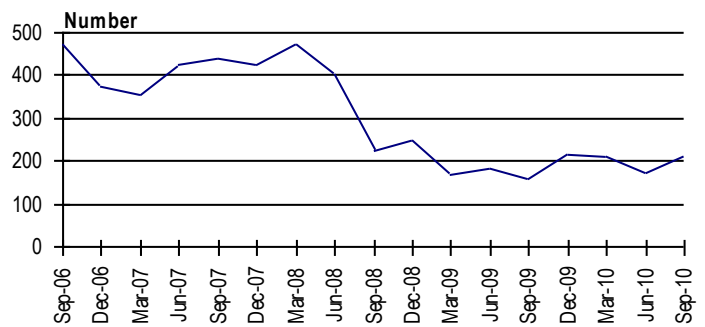
Quarterly Building Permits



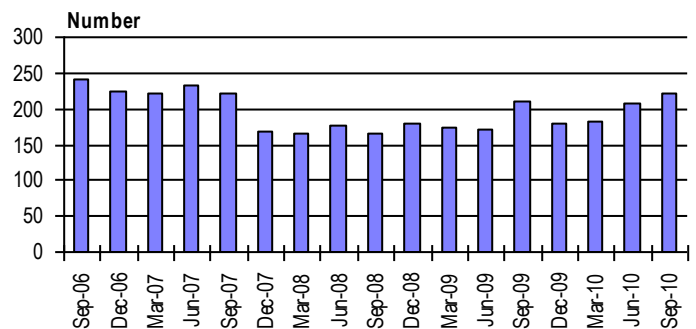
Total Electricity Generated



Total Newly Registered Vehicles



International Aircraft Movement



**Table 7.1 Building Approvals**

Period	Total		Residential		Commercial (*)	
	No.	Value (\$' 000)	No.	Value (\$' 000)	No.	Value (\$' 000)
<b>YEAR</b>						
2005	104	13,951	76	8,308	28	5,643
2006	157	21,532	121	13,883	36	7,649
2007	149	22,276	117	14,111	32	8,165
2008	128	22,948	113	11,846	15	11,102
2009	97	17,123	81	10,328	16	6,795
<b>QUARTER</b>						
<b>2005</b>						
Mar	12	1,596	8	793	4	803
Jun	26	3,395	17	2,459	9	936
Sep	41	6,065	31	3,211	10	2,854
Dec	25	2,895	20	1,845	5	1,050
<b>2006</b>						
Mar	28	6,494	21	2,983	7	3,511
Jun	46	4,291	39	3,386	7	905
Sep	55	7,710	43	5,342	12	2,368
Dec	28	3,037	18	2,172	10	865
<b>2007</b>						
Mar	31	7,746	24	2,707	7	5,039
Jun	47	5,513	38	4,601	9	912
Sep	39	5,183	28	3,298	11	1,885
Dec	32	3,834	27	3,505	5	329
<b>2008</b>						
Mar	30	5,324	22	1,252	8	4,072
Jun	37	4,498	35	4,368	2	130
Sep	28	2,990	26	2,660	2	330
Dec	33	10,136	30	3,566	3	6,570
<b>2009</b>						
Mar	37	8,646	30	3,736	7	4,910
Jun	19	2,386	16	1,996	3	390
Sep	22	3,699	18	2,604	4	1,095
Dec	19	2,392	17	1,992	2	400
<b>2010</b>						
Mar	16	2,886	13	1,861	3	1,025
Jun	15	2,821	12	2,031	3	790
Sep (p)	17	2,699	14	1,961	3	738

**Source:** Building Control - Ministry of Works

**Note:** (\*) - Commercial establishments including Non Private accommodations and Industrial constructions.

**Table 7.2 Energy Generated for Selected Islands**

Period	Cook Islands	Rarotonga	Aitutaki	Atiu	Mauke	Mangaia	Mitiaro	Penrhyn	Rakahanga	Manihiki	Palmerston
	(kwh '000)										
<b>YEAR</b>											
2005	30,294	27,107	1,841	308	183	459	111	118	28	139	...
2006	32,154	28,390	2,345	316	218	465	115	121	30	154	...
2007	33,695	29,592	2,384	443	273	464	130	124	54	231	...
2008	33,449	28,471	3,201	469	241	460	118	124	72	293	...
2009	32,657	27,751	3,285	332	222	450	119	124	74	300	...
<b>QUARTER</b>											
<b>2005</b>											
Mar	6,411	5,717	317	99	66	114	28	29	7	34	...
Jun	7,709	6,889	500	71	39	113	27	29	7	34	...
Sep	7,886	7,054	508	70	39	115	28	30	7	35	...
Dec	8,288	7,447	516	68	39	117	28	30	7	36	...
<b>2006</b>											
Mar	8,614	7,743	545	67	38	119	28	30	7	37	...
Jun	8,098	7,180	578	66	57	115	27	30	7	38	...
Sep	7,215	6,274	600	63	59	116	27	30	7	39	...
Dec	8,227	7,193	622	120	64	115	33	31	9	40	...
<b>2007</b>											
Mar	8,534	7,565	554	105	64	115	35	31	12	53	...
Jun	8,451	7,451	574	110	65	115	36	31	13	56	...
Sep	8,147	7,116	620	89	79	114	25	31	14	59	...
Dec	8,563	7,460	636	139	65	120	34	31	15	63	...
<b>2008</b>											
Mar	8,238	7,196	563	139	66	123	36	31	16	68	...
Jun	8,584	7,222	888	140	59	124	29	31	18	73	...
Sep	8,202	6,844	950	93	58	100	27	31	20	79	...
Dec	8,425	7,209	800	97	58	113	26	31	18	73	...
<b>2009</b>											
Mar	8,579	7,354	819	93	56	110	23	31	18	75	...
Jun	8,134	6,910	820	80	54	109	36	31	19	75	...
Sep(p)	7,961	6,732	825	79	55	115	30	31	19	75	...
Dec(p)	7,983	6,755	821	80	56	117	30	31	19	75	...
<b>2010</b>											
Mar(p)	8,438	7,212	821	84	55	111	30	31	19	75	...
Jun(p)	8,301	7,073	825	83	55	110	30	31	19	75	...
Sep(p)	8,366	7,142	822	82	55	110	30	31	19	75	...

Source: Energy Division of the Ministry of Works and Te Aponga Uira, Rarotonga.

**Table 7.3 Newly Registered Vehicles**

Period	Newly Registered Vehicles					
	Total	Motor Cycles	Cars, Jeeps and Station Wagons	Trucks and Buses	Vans and Pickups	Other Vehicles
<b>YEAR</b>						
2005	1,660	1,086	350	58	131	35
2006	1,862	1,323	307	55	141	36
2007	1,648	1,047	355	65	163	18
2008	1,350	882	267	44	137	20
2009	722	442	163	25	73	19
<b>QUARTER</b>						
<b>2005</b>						
Mar	284	196	49	9	25	5
Jun	470	313	86	20	46	5
Sep	469	305	109	10	31	14
Dec	437	272	106	19	29	11
<b>2006</b>						
Mar	569	431	91	14	29	4
Jun	446	331	55	17	30	13
Sep	471	305	93	12	48	13
Dec	376	256	68	12	34	6
<b>2007</b>						
Mar	357	232	76	11	37	1
Jun	426	272	83	23	38	10
Sep	441	281	89	19	51	1
Dec	424	262	107	12	37	6
<b>2008</b>						
Mar	470	359	56	18	29	8
Jun	404	258	80	8	48	10
Sep	226	130	61	6	29	-
Dec	250	135	70	12	31	2
<b>2009</b>						
Mar	167	112	33	8	12	2
Jun	182	101	41	6	22	12
Sep	158	87	46	3	19	3
Dec	215	142	43	8	20	2
<b>2010</b>						
Mar	212	144	37	7	21	3
Jun	175	111	38	2	15	9
Sep	212	146	43	4	14	5

Source: The Bank of the Cook Islands (BCI), Rarotonga.

**Table 7.4 Aircraft Movement**

Period	Total Flights	From Rarotonga to:						
		Fiji	Tahiti	New Zealand	Honolulu	Australia	Los Angeles	Other
<b>YEAR</b>								
2005	765	54	156	555	-	-	-	-
2006	894	52	155	687	-	-	-	-
2007	844	44	111	663	-	-	26	-
2008	689	-	83	542	-	-	64	-
2009	732	2	75	603	-	-	52	-
<b>QUARTER</b>								
<b>2005</b>								
Mar	163	13	39	111	-	-	-	-
Jun	221	13	39	169	-	-	-	-
Sep	180	14	38	128	-	-	-	-
Dec	201	14	40	147	-	-	-	-
<b>2006</b>								
Mar	178	12	38	128	-	-	-	-
Jun	250	13	39	198	-	-	-	-
Sep	241	13	40	188	-	-	-	-
Dec	225	14	38	173	-	-	-	-
<b>2007</b>								
Mar	222	14	39	169	-	-	-	-
Jun	232	13	26	193	-	-	-	-
Sep	221	13	26	169	-	-	13	-
Dec	169	4	20	132	-	-	13	-
<b>2008</b>								
Mar	165	-	19	122	-	-	24	-
Jun	178	-	22	143	-	-	13	-
Sep	166	-	21	132	-	-	13	-
Dec	180	-	21	145	-	-	14	-
<b>2009</b>								
Mar	173	-	19	141	-	-	13	-
Jun	171	-	18	140	-	-	13	-
Sep	209	2	18	176	-	-	13	-
Dec	179	-	20	146	-	-	13	-
<b>2010</b>								
Mar	182	-	15	154	-	-	13	-
Jun	208	-	13	182	-	-	13	-
Sep	221	-	13	183	-	12	13	-

Source: Air New Zealand, Pacific Blue, Air Rarotonga and Air Tahiti.

**Table 7.5 Air Cargo Imports and Exports**

Period	Total	Air Cargo Imports	Air Cargo Exports
		(kg '000)	
<b>YEAR</b>			
2005	1,663	917	746
2006	1,881	1,554	327
2007	1,429	1,270	159
2008	1,218	1,169	48
2009	1,131	1,056	75
<b>QUARTER</b>			
<b>2005</b>			
Mar	359	189	170
Jun	380	191	189
Sep	454	262	192
Dec	470	275	195
<b>2006</b>			
Mar	363	289	74
Jun	355	283	72
Sep	566	475	91
Dec	597	507	90
<b>2007</b>			
Mar	440	386	54
Jun	333	273	60
Sep	351	318	33
Dec	305	293	12
<b>2008</b>			
Mar	311	297	14
Jun	326	320	6
Sep	310	297	13
Dec	270	255	15
<b>2009</b>			
Mar	190	173	17
Jun	294	272	21
Sep	312	297	15
Dec	335	313	22
<b>2010</b>			
Mar (p)	295	267	28
Jun (p)	318	288	30
Sep (p)	325	290	35

Source: Air Cargo Manifest - Cargo division, Air New Zealand, Rarotonga.

**Table 7.6 Average Temperature, Total Rainfall and  
Total Sunshine Hours for Selected Islands**

Period	Average Temperature (celsius)			Total Rainfall (mm)			Total Hours of Sunshine
	Rarotonga	Aitutaki	Penrhyn	Rarotonga	Aitutaki	Penrhyn	Rarotonga
<b>YEAR</b>							
2005	24.6	25.5	29.0	1,969	793	1,179	2,099
2006	24.8	25.5	29.1	2,246	1,460	1,882	2,169
2007	25.0	25.3	29.0	1,991	1,828	2,024	2,084
2008	25.0	26.1	28.5	1,991	1,358	1,213	2,088
2009	24.3	26.1	28.9	1,657	1,230	1,356	2,282
<b>QUARTER</b>							
<b>2005</b>							
Mar	26.6	27.2	28.9	708	143	459	559
Jun	23.9	25.3	29.4	374	187	272	444
Sep	22.5	24.7	28.9	437	225	212	574
Dec	25.4	24.6	28.9	450	238	236	522
<b>2006</b>							
Mar	27.2	27.4	29.0	848	264	774	510
Jun	24.6	25.9	28.9	399	293	394	501
Sep	22.7	24.4	29.0	675	317	299	552
Dec	24.5	24.2	29.4	324	586	415	606
<b>2007</b>							
Mar	26.4	24.1	29.3	818	747	985	551
Jun	25.2	26.4	29.3	465	188	315	465
Sep	23.2	24.6	28.5	165	283	497	530
Dec	25.0	26.1	29.0	543	610	227	538
<b>2008</b>							
Mar	26.3	26.1	28.6	768	474	437	350
Jun	24.6	26.1	28.9	447	116	203	492
Sep	23.0	26.0	27.9	200	132	307	553
Dec	25.9	26.2	28.7	576	636	266	693
<b>2009</b>							
Mar	27.0	27.3	28.8	669	451	388	595
Jun	24.3	25.8	28.9	454	294	315	535
Sep	22.3	25.1	28.8	264	172	324	523
Dec(p)	23.6	26.2	28.9	269	313	328	630
<b>2010</b>							
Mar	26.8	27.0	29.2	349	437	1473	625
Jun	24.0	26.1	28.8	383	199	326	510
Sep	23.0	25.1	28.4	217	216	439	620

Sources: Meteorological Office, Rarotonga.