

CONSUMER PRICE INDEX

- According to September quarter 2010, Consumer Price Index (CPI) *All Groups* was 118.9, up by 0.6% over June quarter 2010 and it continued to increase at a slower rate of 0.3% over September quarter 2009. Over the same period the “underlying CPI” showed an increase of 0.4% over June quarter 2010 and it decreased by 0.6% over September quarter 2009.
- The percentage change over the quarter in the CPI group chart recorded upward movement of 2.5% in the *Transport group* which was mainly driven by the increase in prices of overseas airfares up by 9.4%.
- Minor increases were noted in the *Apparel, Household Operation, Miscellaneous and Food groups* with 0.7%, 0.5%, 0.3% and 0.2% respectively.
- *Housing group* continued to drop in prices by 0.9% which was mainly caused by the Rent and Mortgage subgroup prices. Prices in *Tobacco & Alcohol* also fell over the quarter by 0.3%.
- The annual average inflation rate increased by 1.2% in the year to September 2010.

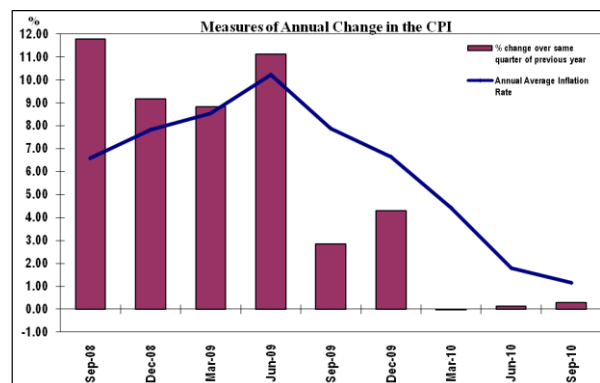
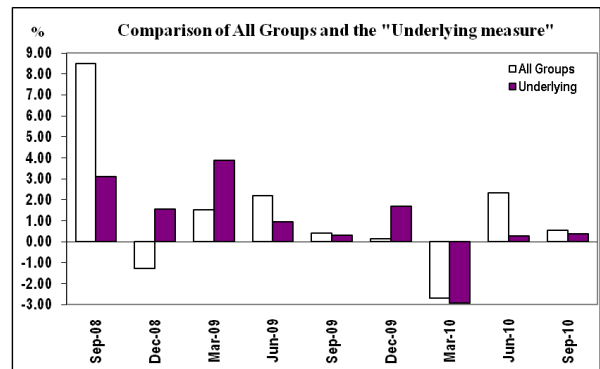
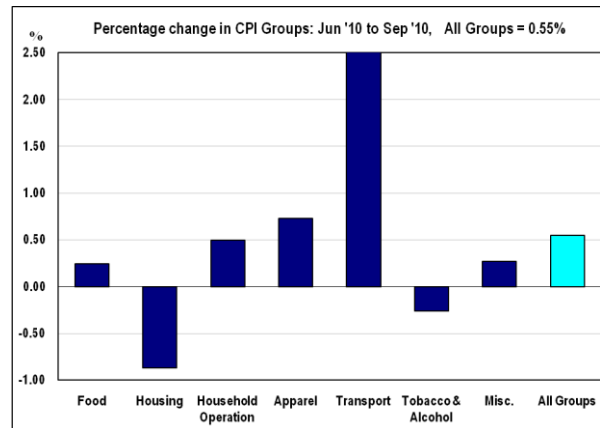


Table 2.1 Consumer Price Index Major Groups

Period	All Groups	Food	Housing	Household Operation	Apparel	Transport	Tobacco & Alcohol	Miscellaneous
YEAR	Base: December 2006 = 100							
2005	96.57	97.64	87.83	93.46	100.02	97.95	100.00	96.17
2006	99.82	99.95	99.31	98.87	99.98	100.72	99.77	99.39
2007	102.34	100.16	107.21	104.57	89.83	103.97	101.81	101.65
2008	110.36	106.05	116.34	113.98	87.03	117.25	113.03	103.90
2009	117.70	117.49	123.54	114.09	86.25	125.02	128.16	108.34
QUARTER								
2005								
Mar	95.22	96.82	85.30	90.19	100.42	96.52	99.39	95.87
Jun	96.30	97.47	85.71	93.95	99.73	97.42	100.31	95.50
Sep	96.47	97.59	85.86	93.97	99.96	97.71	100.58	95.70
Dec	98.29	98.70	94.44	95.74	99.96	100.16	99.71	97.61
2006								
Mar	98.75	100.06	97.06	95.70	99.96	99.13	99.62	98.09
Jun	100.11	99.97	100.50	100.34	99.96	100.71	99.62	99.19
Sep	100.40	99.75	99.66	99.45	100.00	103.04	99.84	100.27
Dec	100.00	100.00	100.00	100.00	100.00	100.00	100.00	100.00
2007								
Mar	100.21	100.41	102.89	99.11	97.33	99.30	101.19	100.25
Jun	101.83	100.94	105.27	105.88	87.51	100.25	102.60	101.91
Sep	103.11	99.39	109.69	105.70	87.25	106.82	102.09	102.03
Dec	104.23	99.89	110.99	107.59	87.23	109.52	101.35	102.41
2008								
Mar	106.14	102.13	113.30	110.46	86.95	111.48	102.78	102.18
Jun	106.24	103.77	114.32	108.23	86.95	110.46	102.98	102.65
Sep	115.25	107.50	118.05	119.48	86.95	130.38	122.32	105.10
Dec	113.80	110.81	119.70	117.75	87.26	116.69	124.02	105.69
2009								
Mar	115.52	115.71	122.41	114.27	85.55	118.84	125.88	106.35
Jun	118.05	117.47	123.84	114.01	85.98	128.32	126.18	107.08
Sep	118.52	117.36	124.37	114.10	85.67	129.48	128.68	107.23
Dec	118.70	119.43	123.53	113.98	87.78	123.43	131.91	112.71
2010								
Mar	115.52	120.63	124.33	106.32	86.76	111.00	131.70	113.43
Jun	118.20	120.61	123.91	106.36	87.56	125.82	131.30	113.20
Sep	118.85	120.91	122.84	106.88	88.19	128.97	130.96	113.51

Table 2.2 Consumer Price Index Major Groups - Percentage Change

Period	All Groups	Food	Housing	Household Operation	Apparel	Transport	Tobacco & Alcohol	Miscellaneous
YEAR	Base: December 2006 = 100							
2005	2.45	1.14	4.91	6.42	0.97	3.14	2.38	-2.64
2006	3.36	2.36	13.07	5.79	-0.04	2.83	-0.23	3.35
2007	2.53	0.21	7.96	5.76	-10.15	3.23	2.04	2.28
2008	7.83	5.88	8.52	9.00	-3.12	12.77	11.02	2.22
2009	6.65	10.79	6.18	0.10	-0.89	6.62	13.39	4.27
QUARTER	Percentage Change Over Previous Quarter							
2008								
Mar	1.83	2.24	2.08	2.67	-0.33	1.79	1.41	-0.23
Jun	0.09	1.60	0.90	-2.02	0.00	-0.91	0.19	0.46
Sep	8.48	3.60	3.26	10.39	0.00	18.02	18.78	2.39
Dec	-1.26	3.08	1.40	-1.45	0.37	-10.50	1.39	0.56
2009								
Mar	1.51	4.42	2.26	-2.95	-1.96	1.84	1.50	0.62
Jun	2.19	1.52	1.17	-0.23	0.50	7.98	0.24	0.69
Sep	0.68	2.93	-0.81	-6.25	2.57	0.51	3.78	6.00
Dec	0.16	1.76	-0.67	-0.10	2.46	-4.68	2.51	5.11
2010								
Mar	-2.68	1.01	0.64	-6.72	-1.16	-10.07	-0.16	0.64
Jun	2.32	-0.01	-0.34	0.04	0.91	13.35	-0.30	-0.20
Sep	0.55	0.24	-0.87	0.50	0.73	2.51	-0.26	0.27
	Percentage Change Over Same Period of Previous Year							
2008								
Mar	5.92	1.71	10.12	11.46	-10.67	12.26	1.58	1.92
Jun	4.33	2.80	8.61	2.22	-0.64	10.19	0.37	0.73
Sep	11.77	8.16	7.62	13.03	-0.34	22.06	19.82	3.01
Dec	14.03	21.04	10.67	-0.66	1.10	17.76	29.21	10.83
2009								
Mar	8.84	13.30	8.04	3.45	-1.60	6.60	22.47	4.08
Jun	11.12	13.21	8.32	5.34	-1.11	16.17	22.53	4.32
Sep	3.13	12.47	4.06	-10.54	1.44	-1.08	7.06	7.99
Dec	4.31	7.77	3.20	-3.20	0.59	5.78	6.36	6.64
2010								
Mar	0.00	4.25	1.57	-6.96	1.41	-6.60	4.62	6.66
Jun	0.13	2.68	0.06	-6.72	1.83	-1.95	4.06	5.72
Sep	0.28	3.02	-1.23	-6.32	2.95	-0.39	1.77	5.85
	Annual Average Inflation Rate							
2008								
Mar	3.64	0.55	8.98	7.70	-12.17	6.20	2.04	2.20
Jun	4.29	1.01	9.93	6.81	-9.48	8.86	1.38	1.70
Sep	6.59	3.13	9.29	8.54	-6.45	13.65	5.81	2.02
Dec	7.83	5.88	8.52	9.00	-3.12	12.77	11.02	2.22
2009								
Mar	8.55	8.81	8.02	7.01	-0.64	11.28	16.24	2.76
Jun	10.22	11.43	7.96	7.76	-0.75	12.76	21.80	3.65
Sep	7.88	11.63	7.37	3.22	-1.03	6.82	17.54	3.40
Dec	6.65	10.79	6.18	0.10	-0.89	6.62	13.39	4.27
2010								
Mar	4.43	8.47	4.55	-2.46	-0.15	3.33	9.11	4.92
Jun	1.80	5.88	2.51	-5.32	0.59	-0.91	5.05	5.27
Sep	1.16	4.38	0.87	-5.78	1.69	-0.83	4.18	6.21

Table 2.3 Consumer Price Index - Food Group

Period	Fruits & Vegetables	Meat, Poultry & Fish	Cereal Products	Soft Drinks & Sweets	Farm Products, Fats & Oils	Other Food	Prepared Food
YEAR	Base: December 2006 = 100						
2005	95.40	98.74	98.02	96.78	97.09	97.28	100.30
2006	99.79	100.43	99.94	99.71	99.29	99.79	99.35
2007	104.44	98.89	99.19	99.19	100.76	100.15	100.24
2008	110.81	101.94	111.88	102.91	113.58	105.87	100.96
2009	119.88	118.54	125.04	111.21	124.89	117.16	106.02
QUARTER							
2005							
Mar	94.89	98.08	95.27	96.86	96.70	97.15	100.55
Jun	94.99	98.51	98.60	96.42	96.16	96.70	100.45
Sep	95.15	98.41	98.93	95.77	97.26	97.48	100.23
Dec	96.56	99.97	99.28	98.07	98.23	97.79	99.95
2006							
Mar	100.23	101.07	99.65	98.99	98.33	97.96	100.04
Jun	98.74	100.58	100.19	100.17	99.68	100.79	100.23
Sep	100.20	100.05	99.91	99.69	99.15	100.42	97.14
Dec	100.00	100.00	100.00	100.00	100.00	100.00	100.00
2007							
Mar	103.55	100.54	99.95	98.54	99.16	98.21	100.93
Jun	105.78	99.84	98.94	98.74	100.05	100.16	102.99
Sep	104.03	97.47	98.92	99.59	101.00	100.40	98.30
Dec	104.40	97.72	98.96	99.90	102.82	101.82	98.75
2008							
Mar	106.30	98.04	107.49	100.44	104.93	103.25	98.95
Jun	107.69	99.83	108.21	102.88	111.90	103.72	99.10
Sep	112.57	103.55	111.59	103.11	117.90	107.12	102.90
Dec	116.67	106.34	120.23	105.22	119.58	109.40	102.90
2009							
Mar	122.59	114.04	123.18	107.50	124.53	116.52	104.91
Jun	123.07	117.08	126.21	111.31	124.61	116.89	105.00
Sep	116.44	119.48	125.59	110.73	124.66	117.45	105.83
Dec	117.41	123.55	125.17	115.30	125.75	117.77	108.36
2010							
Mar	119.37	124.15	124.93	124.13	126.39	119.70	108.32
Jun	119.62	125.25	125.21	124.19	125.30	120.27	106.40
Sep	117.67	125.39	124.94	125.12	126.17	120.79	108.33

Table 2.4 Consumer Price Index Food Group - Percentage Change

Period	Fruits & Vegetables	Meat, Poultry & Fish	Cereal Products	Soft Drinks & Sweets	Farm Products, Fats & Oils	Other Food	Prepared Food
YEAR	Base: December 2006 = 100						
2005	0.96	1.64	3.01	-0.22	0.26	-1.64	-0.76
2006	4.61	1.71	1.96	3.03	2.27	2.58	-0.94
2007	5.03	-1.70	0.91	-0.40	2.32	0.98	0.63
2008	14.79	19.87	26.06	12.12	23.95	16.98	5.77
2009	8.19	16.28	11.76	8.06	9.96	10.66	5.02
QUARTER	Percentage change over previous quarter						
2005							
Mar	-0.17	0.79	-0.01	0.06	0.10	0.12	1.13
Jun	0.10	0.43	3.49	-0.45	-0.56	-0.47	-0.09
Sep	0.18	-0.10	0.33	-0.67	1.14	0.81	-0.22
Dec	1.48	1.59	0.35	2.40	1.00	0.31	-0.28
2006							
Mar	3.80	1.10	0.38	0.94	0.10	0.18	0.09
Jun	-1.49	-0.48	0.54	1.19	1.38	2.88	0.19
Sep	1.48	-0.53	-0.28	-0.48	-0.53	-0.37	-3.08
Dec	6.09	-2.02	7.58	0.76	5.83	2.82	1.86
2007							
Mar	3.55	0.54	-0.05	-1.46	-0.84	-1.79	0.93
Jun	2.15	-0.70	-1.01	0.20	0.90	1.98	2.04
Sep	-1.65	-2.37	-0.02	0.86	0.95	0.23	-4.56
Dec	0.35	0.25	0.04	0.31	1.80	1.42	0.46
2008							
Mar	1.82	0.33	8.62	0.54	2.06	1.40	0.20
Jun	1.31	1.83	0.67	2.43	6.64	0.46	0.15
Sep	4.53	3.73	3.12	0.23	5.36	3.28	3.83
Dec	3.65	2.70	7.75	2.04	1.43	2.13	0.00
2009							
Mar	5.07	7.24	2.45	2.17	4.14	6.51	1.95
Jun	0.39	2.67	2.46	3.55	0.06	0.31	0.08
Sep	-4.39	7.10	-1.01	12.40	1.25	3.34	3.18
Dec	0.83	3.41	-0.33	4.13	0.88	0.28	2.39
2010							
Mar	1.67	0.48	-0.19	7.65	0.51	1.64	-0.04
Jun	0.21	0.89	0.22	0.05	-0.86	0.47	-1.78
Sep	-1.63	0.11	-0.22	0.75	0.69	0.43	1.82

Table 2.5 Consumer Price Index by Major groups and Sub-groups

Major Groups & Subgroups	Base Weight	Calendar Year					Quarter						
							2009			2010			
		2005	2006	2007	2008	2009	Mar	Jun	Sep	Dec	Mar	Jun	Sep
FOOD	29.39	97.64	99.95	100.16	106.05	117.49	115.71	117.47	117.36	119.43	120.63	120.61	120.91
Fruits & Vegetables	3.56	95.40	99.79	104.44	110.81	119.88	122.59	123.07	116.44	117.41	119.37	119.62	117.67
Meat, Poultry & Fish	7.96	98.74	100.43	98.89	101.94	118.54	114.04	117.08	119.48	123.55	124.15	125.25	125.39
Cereal Products	5.32	98.02	99.94	99.19	111.88	125.04	123.18	126.21	125.59	125.17	124.93	125.21	124.94
Soft Drink & Sweets	2.12	96.78	99.71	99.19	102.91	111.21	107.50	111.31	110.73	115.30	124.13	124.19	125.12
Farm Products, Fats & Oils	2.57	97.09	99.29	100.76	113.58	124.89	124.53	124.61	124.66	125.75	126.39	125.30	126.17
Other Food	2.46	97.28	99.79	100.15	105.87	117.16	116.52	116.89	117.45	117.77	119.70	120.27	120.79
Prepared Food	5.39	100.30	99.35	100.24	100.96	106.02	104.91	105.00	105.83	108.36	108.32	106.40	108.33
HOUSING	13.24	87.83	99.31	107.21	116.34	123.54	122.41	123.84	124.37	123.53	124.33	123.91	122.84
Rent & Mortgages	8.99	79.01	98.16	110.10	122.77	131.59	129.79	132.11	132.83	131.64	132.63	132.03	130.19
House Insurance	0.54	90.42	97.49	100.00	100.00	100.00	100.00	100.00	100.00	100.00	100.00	100.00	100.00
House Maintenance	3.70	104.81	101.88	101.24	103.14	107.43	107.79	107.25	107.40	107.30	107.75	107.72	108.33
HOUSEHOLD OPERATION	17.40	93.46	98.87	104.57	113.98	114.09	114.27	114.01	114.10	113.98	106.32	106.36	106.88
Fuel & Light	6.20	81.18	95.68	110.54	137.51	137.78	137.78	137.78	137.78	115.62	115.62	115.62	115.62
Household Appliances	2.35	108.74	105.15	101.32	102.65	96.08	97.55	97.55	94.46	94.77	96.17	96.17	96.17
Furniture	1.20	100.00	100.00	112.06	115.23	121.64	123.01	121.18	121.18	121.18	121.18	121.18	131.50
Home Furnishing	0.57	103.08	100.08	97.31	99.47	96.11	96.31	94.53	96.75	96.84	96.84	96.84	87.85
Cleaning Supplies	0.69	100.62	100.68	100.80	102.53	109.84	107.96	106.95	110.57	113.90	114.55	117.32	118.77
Household Supplies	0.84	103.43	101.85	97.19	95.16	100.86	101.47	100.70	100.40	100.87	101.22	99.74	100.92
Household Services	5.54	97.46	98.73	100.00	97.61	98.03	97.81	97.81	98.75	97.75	97.75	97.75	97.75
APPAREL	4.69	100.02	99.98	89.83	87.03	86.25	85.55	85.98	85.67	87.78	86.76	87.56	88.19
Clothing	2.96	99.78	99.97	89.21	86.57	84.36	83.01	83.69	83.69	87.04	84.96	84.96	84.96
Clothing Materials	0.51	105.32	100.00	100.00	100.00	100.00	100.00	100.00	100.00	100.00	100.00	100.00	105.84
Footwear	1.22	100.00	100.00	87.05	82.68	85.05	85.66	85.66	84.45	84.45	85.58	88.64	88.64
TRANSPORTATION	18.56	97.95	100.72	103.97	117.25	125.02	118.84	128.32	129.48	123.43	111.00	125.82	128.97
Internal Travel	1.16	91.01	95.51	108.63	150.18	165.21	165.21	165.21	165.21	165.21	165.21	165.21	165.21
Overseas Travel	3.94	99.80	100.00	111.53	137.74	148.35	132.47	160.56	165.26	135.12	90.12	154.70	169.29
Motor Vehicles	7.56	106.64	102.54	99.71	99.66	113.20	110.61	114.06	114.06	114.06	106.90	109.06	109.06
Motor Fuel & Oil	3.52	91.00	103.27	104.55	130.05	117.35	108.66	119.23	120.04	121.48	121.67	122.82	123.12
Motor Vehicle Expenses	2.38	102.11	100.11	101.87	104.22	115.69	114.87	115.75	115.78	116.35	116.44	116.47	116.47
TOBACCO & ALCOHOL	8.05	100.00	99.77	101.81	113.03	128.16	125.88	126.18	128.68	131.91	131.70	131.30	130.96
Tobacco	1.80	96.88	98.91	102.08	142.27	184.16	183.50	183.75	184.19	185.21	185.24	182.52	181.10
Alcohol	6.24	101.18	100.09	101.73	104.58	112.00	109.25	109.56	112.65	116.53	116.24	116.51	116.48
MISCELLANEOUS	8.67	96.17	99.39	101.65	103.90	108.34	106.35	107.08	107.23	112.71	113.43	113.20	113.51
Other Goods	5.00	96.30	99.84	101.25	101.01	106.17	102.71	103.98	104.24	113.74	115.00	114.59	115.13
Other Services	3.67	95.68	97.72	102.20	107.82	111.30	102.71	111.30	111.30	111.30	111.30	111.30	111.30
ALL GROUPS	100.00	96.57	99.82	102.34	110.36	117.70	115.52	118.05	118.52	118.70	115.52	118.20	118.85
"Underlying CPI" ^(r)		99.23	100.24	99.83	104.10	112.80	111.33	112.41	112.76	114.68	111.32	111.64	112.07
Underlying CPI (% change over same period of Previous year)							9.81	9.84	6.87	7.02	-0.01	-0.68	-0.61

Table 2.6 Consumer Price Index - Contributions to the overall change

Major Groups & Subgroups	Base Weight	Jun '10		Sep '10		% change	Contribution
		Index No.	Index Point	Index No.	Index Point	Jun '10 Sep '10	to % change Sep '10
FOOD	29.39	120.61	35.45	120.91	35.54	0.24	0.07
Fruits & Vegetables	3.56	119.62	4.26	117.67	4.19	-1.63	-0.06
Meat, Poultry & Fish	7.96	125.25	9.97	125.39	9.98	0.11	0.01
Cereal Products	5.32	125.21	6.67	124.94	6.65	-0.22	-0.01
Soft Drink & Sweets	2.12	124.19	2.64	125.12	2.66	0.75	0.02
Farm Products, Fats & Oils	2.57	125.30	3.22	126.17	3.24	0.69	0.02
Other Food	2.46	120.27	2.96	120.79	2.97	0.43	0.01
Prepared Food	5.39	106.40	5.74	108.33	5.84	1.82	0.09
HOUSING	13.24	123.91	16.41	122.84	16.27	-0.87	-0.12
Rent & Mortgages	8.99	132.03	11.87	130.19	11.71	-1.39	-0.14
House Insurance	0.54	100.00	0.54	100.00	0.54	0.00	0.00
House Maintenance	3.70	107.72	3.99	108.33	4.01	0.57	0.02
HOUSEHOLD OPERATION	17.40	106.36	18.50	106.88	18.59	0.50	0.08
Fuel & Light	6.20	115.62	7.16	115.62	7.16	0.00	0.00
Household Appliances	2.35	96.17	2.26	96.17	2.26	0.00	0.00
Furniture	1.20	121.18	1.45	131.50	1.58	8.51	0.10
Home Furnishing	0.57	96.84	0.56	87.85	0.50	-9.28	-0.04
Cleaning Supplies	0.69	117.32	0.81	118.77	0.82	1.24	0.01
Household Supplies	0.84	99.74	0.84	100.92	0.85	1.18	0.01
Household Services	5.54	97.75	5.42	97.75	5.42	0.00	0.00
APPAREL	4.69	87.56	4.11	88.19	4.14	0.73	0.03
Clothing	2.96	84.96	2.52	84.96	2.52	0.00	0.00
Clothing Materials	0.51	100.00	0.51	105.84	0.54	5.84	0.03
Footwear	1.22	88.64	1.08	88.64	1.08	0.00	0.00
TRANSPORTATION	18.56	125.82	23.35	128.97	23.94	2.51	0.50
Internal Travel	1.16	165.21	1.91	165.21	1.91	0.00	0.00
Overseas Travel	3.94	154.70	6.10	169.29	6.68	9.43	0.49
Motor Vehicles	7.56	109.06	8.24	109.06	8.24	0.00	0.00
Motor Fuel & Oil	3.52	122.82	4.32	123.12	4.34	0.24	0.01
Motor Vehicle Expenses	2.38	116.47	2.77	116.47	2.77	0.00	0.00
TOBACCO & ALCOHOL	8.05	131.30	10.56	130.96	10.54	-0.26	-0.02
Tobacco	1.80	182.52	3.29	181.10	3.26	-0.78	-0.02
Alcohol	6.24	116.51	7.27	116.48	7.27	-0.03	0.00
MISCELLANEOUS	8.67	113.20	9.82	113.51	9.84	0.27	0.02
Other Goods	5.00	114.59	5.73	115.13	5.76	0.47	0.02
Other Services	3.67	111.30	4.09	111.30	4.09	0.00	0.00
ALL GROUPS	100.00	118.20	118.20	118.85	118.85	0.55	0.55
"Underlying CPI"		111.64	70.31	112.07	70.57	0.38	0.23

Table 2.7 Average Prices of Selected Commodities

Items	Unit	Calendar Year					2005				2006				2007				2008				2009				2010			
		2005	2006	2007	2008	2009	Mar	Jun	Sep	Dec	Mar	Jun	Sep	Dec	Mar	Jun	Sep	Dec	Mar	Jun	Sep	Dec	Mar	Jun	Sep	Dec	Mar	Jun	Sep	
Banana	dozen	3.00	3.00	3.11	3.12	3.70	3.00	3.00	3.00	3.00	3.00	3.00	3.00	3.00	3.20	3.09	3.09	3.09	3.09	3.09	3.15	3.15	3.15	6.12	2.68	2.84	2.67	2.67	2.65	
Orange	dozen	4.78	4.65	4.83	4.85	5.02	4.68	4.68	4.87	4.87	4.92	4.63	4.50	4.56	4.50	4.63	4.63	5.59	5.59	4.40	4.37	5.05	5.05	4.95	4.99	5.09	5.09	4.94	5.03	
Kumara	kg	3.35	3.31	3.42	3.35	3.82	3.35	3.35	3.35	3.35	3.35	3.30	3.30	3.30	3.42	3.42	3.42	3.42	3.35	3.35	3.35	3.35	3.68	3.71	3.95	3.95	3.93	3.83	4.85	
Potato	kg	1.64	1.65	1.82	1.97	2.29	1.74	1.68	1.51	1.61	1.71	1.70	1.59	1.59	1.83	1.86	1.80	1.78	1.83	1.90	2.00	2.15	2.61	2.18	2.21	2.18	2.49	2.66	2.37	
Taro	kg	3.47	3.56	3.61	3.96	4.13	3.26	3.54	3.54	3.54	3.54	3.54	3.54	3.61	3.61	3.61	3.61	3.61	3.65	3.65	4.28	4.28	4.28	4.08	4.08	4.08	4.08	4.08	4.08	
Onion	kg	1.54	1.88	1.95	1.98	2.45	1.60	1.52	1.44	1.60	1.96	1.85	1.85	1.86	2.01	1.99	1.94	1.88	1.95	1.94	1.90	2.14	2.57	2.30	2.30	2.61	2.66	2.81	2.61	
Beef Sausage	450g	5.76	5.95	6.08	6.28	6.12	5.73	5.76	5.79	5.79	5.91	5.81	5.81	6.25	6.31	6.15	6.03	5.83	6.13	6.27	6.44	6.27	5.91	6.06	5.98	6.52	6.54	6.58	6.62	
Tinned Corned Beef-Pacific	340g	4.43	4.18	4.14	4.37	4.80	4.43	4.43	4.43	4.43	4.43	4.21	3.84	4.22	4.03	4.14	4.18	4.23	4.23	4.30	4.30	4.65	4.65	4.65	4.65	5.23	5.43	5.53	6.18	
Tinned Corned Beef-Pacific	454g	5.62	5.32	5.27	5.47	6.30	5.63	5.60	5.65	5.60	5.61	5.49	4.94	5.24	5.14	5.28	5.28	5.39	5.37	5.37	5.45	5.69	5.99	6.13	6.31	6.78	6.64	6.64	7.18	
Tinned Corned Beef-Palm	454g	5.08	5.10	5.12	5.23	5.68	5.14	5.03	5.13	5.03	5.13	5.13	5.06	5.07	5.09	5.11	5.11	5.15	5.19	5.18	5.26	5.28	5.43	5.55	5.84	5.89	5.87	5.87	5.87	
Tinned Sardines	100g	2.50	2.49	2.58	2.69	2.94	2.49	2.55	2.45	2.52	2.53	2.46	2.50	2.49	2.61	2.46	2.58	2.69	2.72	2.67	2.67	2.69	2.77	2.82	3.00	3.16	3.14	3.21	3.28	
Tinned Mackerel in oil	425g	3.87	3.85	3.80	3.57	3.70	3.86	3.86	3.88	3.88	3.83	3.85	3.82	3.90	3.88	3.92	3.75	3.64	3.59	3.59	3.51	3.58	3.58	3.34	3.86	4.02	4.13	4.28	4.28	
Tinned Tuna in oil	185g	2.94	2.78	2.74	2.89	3.06	3.05	3.03	2.84	2.83	2.79	2.82	2.79	2.72	2.90	2.73	2.70	2.63	2.81	2.72	2.99	3.04	3.24	2.92	2.91	3.18	3.17	3.26	3.39	
Square Loaf Bread	each	3.47	3.54	3.55	4.32	4.70	3.39	3.50	3.50	3.50	3.53	3.53	3.54	3.55	3.55	3.55	3.55	3.55	3.55	4.20	4.20	4.18	4.70	4.70	4.70	4.70	4.70	4.70	4.70	
Cabin Bread	400g	2.20	2.15	2.02	2.17	2.51	2.21	2.21	2.18	2.18	2.16	2.16	2.16	2.11	2.04	2.00	2.00	2.02	2.08	2.04	2.24	2.32	2.33	2.54	2.59	2.59	2.60	2.56	2.56	
Cream Cracker	250g	3.20	3.13	3.03	3.05	3.17	3.15	3.22	3.20	3.22	3.20	3.23	3.06	3.04	2.98	3.06	3.07	3.01	3.01	3.01	3.04	3.12	3.10	3.16	3.19	3.23	3.20	3.26	3.29	
Short Grain Rice	500g	0.98	1.05	1.14	1.28	1.98	0.97	0.98	0.98	0.98	0.99	1.05	1.04	1.10	1.12	1.15	1.15	1.14	1.17	1.17	1.35	1.42	1.83	2.15	2.02	1.92	1.86	1.93	1.88	
Milk Powder	900g	9.59	9.67	9.95	11.98	13.58	9.58	9.61	9.58	9.59	9.58	9.63	9.54	9.95	9.75	9.87	9.85	10.32	10.96	12.05	12.42	12.48	14.02	13.09	13.70	13.53	13.63	13.66	13.53	
Butter	454g	3.38	3.39	3.52	4.90	5.81	3.48	3.32	3.38	3.34	3.28	3.52	3.38	3.40	3.42	3.54	3.48	3.63	3.72	5.13	5.27	5.50	5.73	5.58	5.84	6.06	5.93	5.94	6.11	
Egg	dozen	5.83	6.12	6.00	6.24	6.57	5.69	5.73	5.83	6.09	6.12	6.12	6.13	6.12	6.00	5.99	6.02	6.00	6.05	6.07	6.35	6.47	6.43	6.46	6.62	6.75	6.72	6.57	6.78	
White Sugar	1.5kg	2.59	3.06	3.38	3.85	4.43	2.58	2.58	2.59	2.60	2.66	3.12	3.16	3.30	3.30	3.33	3.38	3.51	3.63	3.70	3.96	4.12	4.35	4.44	4.45	4.47	4.44	4.44	4.61	
Timber	lin. mtr	3.93	4.00	4.27	4.27	4.50	3.93	3.93	3.93	3.93	3.93	3.93	3.93	4.23	4.38	4.38	4.10	4.20	4.23	4.23	4.30	4.30	4.50	4.50	4.50	4.50	4.50	4.50	4.65	
Roofing Iron	sheet	15.97	15.05	15.83	15.83	16.70	15.32	16.20	16.70	15.65	14.67	15.18	15.18	15.18	15.70	15.70	15.95	15.95	15.95	15.95	15.70	15.70	16.70	16.70	16.70	16.70	16.70	16.70	16.95	
Soap Powder	kg	6.28	6.22	6.09	6.24	6.75	6.27	6.24	6.30	6.29	6.23	6.27	6.26	6.13	6.01	6.09	6.09	6.19	6.25	6.25	6.17	6.30	6.42	6.60	6.84	7.14	7.15	7.43	7.49	
Petrol	litre	1.77	2.00	2.07	2.54	2.33	1.65	1.75	1.76	1.91	1.82	2.00	2.26	1.93	1.90	2.00	2.14	2.25	2.42	2.28	2.78	2.67	2.09	2.37	2.41	2.44	2.44	2.46	2.46	
Cigarette	pkt of 25	6.49	6.58	7.66	10.14	12.69	6.40	6.49	6.55	6.54	6.54	6.54	6.61	6.61	7.48	7.61	7.78	7.78	7.78	7.78	7.78	12.50	12.50	12.64	12.67	12.67	12.79	12.76	12.54	12.54