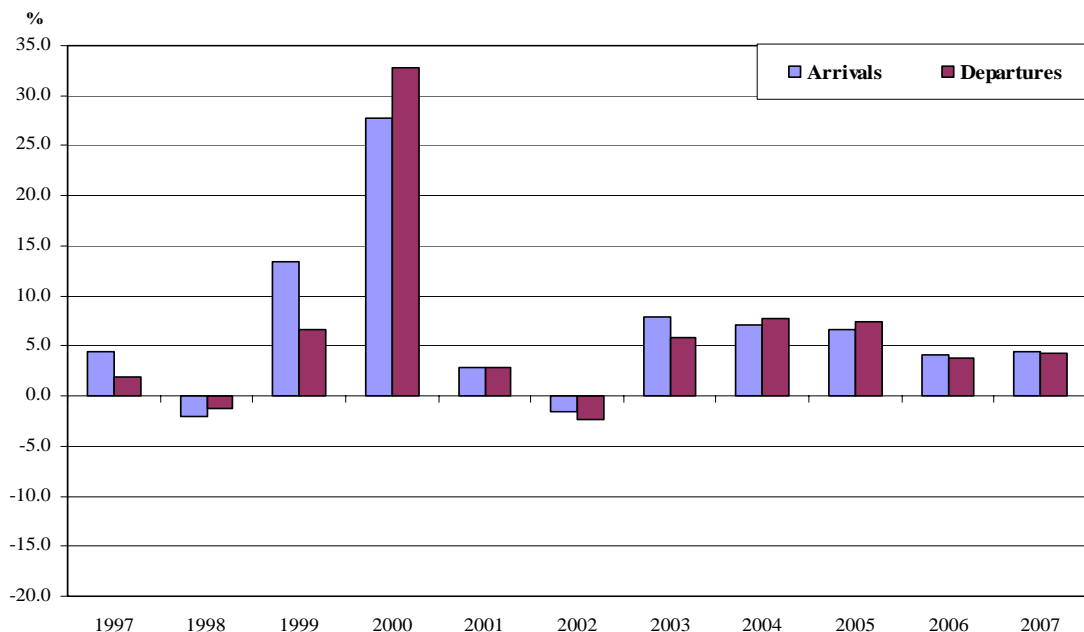


# Tourism & Migration

- ❑ Total arrivals to the Cook Islands for 2008 was 105,931 of which 94,152 were visitors, showing a decrease of 3.3% over 2007. Visitors from New Zealand dominated visitor arrivals with 57.5%, followed by Europe and Australia with 12.7% and 10.7% respectively. Visitors from New Zealand increased by 1,699 persons in 2008, while visitors from Europe decreased by 1,936 persons.
- ❑ Of the total arrivals, 76,206 (71.9%) came for vacation purposes; while 10,885 (10.3%) came to visit friends and relatives. 62,546 (59.0%) were accommodated in hotels and motels.
- ❑ Resident departure for 2008 was 12,878, a decrease of 1.1% when compared to the previous year. A net outward flow of migration was experienced from 1987 to 1990 and from 1996 up until 2008, with the highest recorded outflow of 1,429 persons in the year 2000.
- ❑ Tourism accommodation room occupancy rates for 2008 was 53.3% compared to 52.7% in 2007 showing a slight increase over the previous year.

**Total Arrivals and Departures**  
Percentage change over previous year



**Table 6.1 Total Arrivals and Departures**

Calendar Year	Total			Visitors			Cook Islands Residents		
	Arrivals	Departures	Excess <sup>(1)</sup>	Arrivals	Departures	Excess <sup>(1)</sup>	Arrivals	Departures	Excess <sup>(1)</sup>
1987	37,779	37,330	449	29,569	27,546	2,023	8,210	9,784	-1,574
1988	38,573	38,567	6	30,194	28,491	1,703	8,379	10,076	-1,697
1989	38,455	38,422	33	29,503	27,804	1,699	8,952	10,618	-1,666
1990	38,957	39,491	-534	30,439	29,675	764	8,518	9,816	-1,298
1991	45,395	45,021	374	39,976	40,485	-509	5,419	4,536	883
1992	56,146	55,609	537	50,190	50,180	10	5,956	5,429	527
1993	59,384	58,937	447	53,569	54,244	-675	5,815	4,693	1,122
1994	63,923	64,141	-218	57,293	57,909	-616	6,630	6,232	398
1995	54,239	52,945	1,294	47,899	46,773	1,126	6,340	6,172	168
1996	54,286	56,899	-2,613	48,354	50,137	-1,783	5,932	6,762	-830
1997	56,669	57,951	-1,282	49,866	49,972	-106	6,803	7,979	-1,176
1998	55,552	57,260	-1,708	48,629	49,015	-386	6,923	8,245	-1,322
1999	62,970	61,096	1,874	55,599	53,084	2,515	7,371	8,012	-641
2000	80,485	81,131	-646	72,994	72,211	783	7,491	8,920	-1,429
2001	82,736	83,398	-662	74,575	74,287	288	8,161	9,111	-950
2002	81,473	81,404	69	72,781	71,985	796	8,692	9,419	-727
2003	87,846	86,191	1,655	78,328	75,970	2,358	9,518	10,221	-703
2004	94,086	92,841	1,245	83,333	81,145	2,188	10,753	11,696	-943
2005	100,360	99,667	693	88,405	86,832	1,573	11,955	12,835	-880
2006 <sup>(f)</sup>	104,422	103,470	952	92,328	90,392	1,936	12,094	13,078	-984
2007 <sup>(f)</sup>	109,431	108,160	1,271	97,316	95,136	2,180	12,115	13,024	-909
2008 <sup>(p)</sup>	105,931	107,234	-1,303	94,152	94,356	-204	11,779	12,878	-1,099
Percentage Change over previous year									
1987	7.5	6.0	..	4.2	-0.1	..	21.6	27.9	..
1988	2.1	3.3	..	2.1	3.4	..	2.1	3.0	..
1989	-0.3	-0.4	..	-2.3	-2.4	..	6.8	5.4	..
1990	1.3	2.8	..	3.2	6.7	..	-4.8	-7.6	..
1991	16.5	14.0	..	31.3	36.4	..	-36.4	-53.8	..
1992	23.7	23.5	..	25.6	23.9	..	9.9	19.7	..
1993	5.8	6.0	..	6.7	8.1	..	-2.4	-13.6	..
1994	7.6	8.8	..	7.0	6.8	..	14.0	32.8	..
1995	-15.1	-17.5	..	-16.4	-19.2	..	-4.4	-1.0	..
1996	0.1	7.5	..	0.9	7.2	..	-6.4	9.6	..
1997	4.4	1.8	..	3.1	-0.3	..	14.7	18.0	..
1998	-2.0	-1.2	..	-2.5	-1.9	..	1.8	3.3	..
1999	13.4	6.7	..	14.3	8.3	..	6.5	-2.8	..
2000	27.8	32.8	..	31.3	36.0	..	1.6	11.3	..
2001	2.8	2.8	..	2.2	2.9	..	8.9	2.1	..
2002	-1.5	-2.4	..	-2.4	-3.1	..	6.5	3.4	..
2003	7.8	5.9	..	7.6	5.5	..	9.5	8.5	..
2004	7.1	7.7	..	6.4	6.8	..	13.0	14.4	..
2005	6.7	7.4	..	6.1	7.0	..	11.2	9.7	..
2006 <sup>(f)</sup>	4.0	3.8	..	4.4	4.1	..	1.2	1.9	..
2007 <sup>(f)</sup>	4.8	4.5	..	5.4	5.2	..	0.2	-0.4	..
2008 <sup>(p)</sup>	-3.2	-0.9	..	-3.3	-0.8	..	-2.8	-1.1	..

NOTE: <sup>(1)</sup> Excess = Arrivals minus Departures

**Table 6.2 Total Arrivals by Country of Usual Residence**

Calendar Year	Total	New Zealand	Australia	USA	Canada	Europe	Asia	Cook Islands	French Polynesia	Other Country
1987	37,779	12,122	5,119	2,919	2,293	5,344	354	8,210	449	969
1988	38,573	12,624	5,272	3,233	1,961	5,348	314	8,379	600	842
1989	38,455	11,954	5,376	3,181	1,825	5,664	382	8,952	498	623
1990	38,957	11,300	4,950	4,295	2,443	6,020	354	8,518	545	532
1991	45,395	15,306	5,889	4,397	4,087	8,460	599	5,419	744	494
1992	56,146	17,872	5,626	5,949	3,991	13,533	604	5,956	1,793	822
1993	59,384	15,146	5,864	7,898	4,141	17,500	766	5,815	1,366	888
1994	63,923	15,312	5,186	7,839	3,962	20,380	627	6,630	3,282	705
1995	54,239	14,161	4,361	5,270	2,667	18,600	646	6,340	1,620	574
1996	54,286	14,538	4,075	6,088	2,757	18,024	447	5,932	1,845	580
1997	56,669	14,067	3,907	6,417	3,074	19,896	548	6,803	1,055	902
1998	55,552	14,150	4,021	5,365	3,622	19,290	450	6,923	1,072	659
1999	62,970	17,137	6,939	5,853	5,230	18,382	443	7,371	742	873
2000	80,485	22,019	12,128	6,734	5,992	23,683	654	7,491	756	1,028
2001	82,736	24,325	11,826	7,145	6,270	22,817	459	8,161	538	1,195
2002	81,473	28,841	9,952	6,716	4,789	19,630	503	8,692	936	1,414
2003	87,846	30,921	11,470	7,630	3,760	21,559	581	9,518	1,089	1,318
2004	94,086	38,755	11,850	6,026	2,419	20,410	552	10,753	1,442	1,879
2005	100,360	49,088	11,313	4,434	2,029	18,162	546	11,955	1,334	1,499
2006 <sup>(f)</sup>	104,422	51,841	11,470	5,476	2,205	18,109	550	12,094	1,163	1,514
2007 <sup>(f)</sup>	109,431	59,195	12,363	4,356	2,601	15,350	494	12,115	1,354	1,603
2008 <sup>(p)</sup>	105,931	60,894	11,362	3,512	2,133	13,414	496	11,779	1,039	1,302
Percentage Composition										
1987	100.0	32.1	13.5	7.7	6.1	14.1	0.9	21.7	1.2	2.6
1988	100.0	32.7	13.7	8.4	5.1	13.9	0.8	21.7	1.6	2.2
1989	100.0	31.1	14.0	8.3	4.7	14.7	1.0	23.3	1.3	1.6
1990	100.0	29.0	12.7	11.0	6.3	15.5	0.9	21.9	1.4	1.4
1991	100.0	33.7	13.0	9.7	9.0	18.6	1.3	11.9	1.6	1.1
1992	100.0	31.8	10.0	10.6	7.1	24.1	1.1	10.6	3.2	1.5
1993	100.0	25.5	9.9	13.3	7.0	29.5	1.3	9.8	2.3	1.5
1994	100.0	24.0	8.1	12.3	6.2	31.9	1.0	10.4	5.1	1.1
1995	100.0	26.1	8.0	9.7	4.9	34.3	1.2	11.7	3.0	1.1
1996	100.0	26.8	7.5	11.2	5.1	33.2	0.8	10.9	3.4	1.1
1997	100.0	24.8	6.9	11.3	5.4	35.1	1.0	12.0	1.9	1.6
1998	100.0	25.5	7.2	9.7	6.5	34.7	0.8	12.5	1.9	1.2
1999	100.0	27.2	11.0	9.3	8.3	29.2	0.7	11.7	1.2	1.4
2000	100.0	27.4	15.1	8.4	7.4	29.4	0.8	9.3	0.9	1.3
2001	100.0	29.4	14.3	8.6	7.6	27.6	0.6	9.9	0.7	1.4
2002	100.0	35.4	12.2	8.2	5.9	24.1	0.6	10.7	1.1	1.7
2003	100.0	35.2	13.1	8.7	4.3	24.5	0.7	10.8	1.2	1.5
2004	100.0	41.2	12.6	6.4	2.6	21.7	0.6	11.4	1.5	2.0
2005	100.0	48.9	11.3	4.4	2.0	18.1	0.5	11.9	1.3	1.5
2006 <sup>(f)</sup>	100.0	49.6	11.0	5.2	2.1	17.3	0.5	11.6	1.1	1.4
2007 <sup>(f)</sup>	100.0	54.1	11.3	4.0	2.4	14.0	0.5	11.1	1.2	1.5
2008 <sup>(p)</sup>	100.0	57.5	10.7	3.3	2.0	12.7	0.5	11.1	1.0	1.2

**Table 6.3 Total Arrivals by Purpose of Visit**

Calendar Year	Total	Vacation	Business	Employment	Conference	Visit Friends and Relations	Returning	Other
1987	37,779	26,248	1,827	157	..	..	8,210	1,337
1988	38,573	27,087	1,916	185	..	..	8,379	1,006
1989	38,455	26,830	1,863	92	..	..	8,952	718
1990	38,957	27,626	2,011	186	..	..	8,518	616
1991	45,395	35,589	2,120	221	..	..	5,419	2,046
1992	56,146	43,516	2,402	271	..	..	5,956	4,001
1993	59,384	48,407	2,145	206	..	..	5,815	2,811
1994	63,923	52,357	2,110	210	..	..	6,630	2,616
1995	54,239	44,414	1,745	144	..	..	6,340	1,596
1996	54,286	44,875	1,634	156	..	..	5,932	1,689
1997	56,669	45,942	2,057	160	..	..	6,803	1,707
1998	55,552	43,387	1,683	83	76	1,939	6,923	1,461
1999	62,970	45,881	1,950	210	320	5,292	7,371	1,946
2000	80,485	63,583	2,113	507	755	4,629	7,491	1,407
2001	82,736	65,168	2,398	215	562	4,714	8,161	1,518
2002	81,473	62,228	2,259	81	1,242	5,469	8,692	1,502
2003	87,846	66,883	2,950	156	912	5,962	9,518	1,465
2004	94,086	68,988	2,651	196	1,056	8,459	10,753	1,983
2005	100,360	72,849	2,537	211	661	9,646	11,955	2,501
2006 <sup>(f)</sup>	104,422	75,781	2,607	331	892	9,920	12,094	2,797
2007 <sup>(f)</sup>	109,431	78,638	3,030	238	1,077	11,450	12,115	2,883
2008 <sup>(g)</sup>	105,931	76,206	2,952	234	1,041	10,885	11,779	2,834
	Percentage Change over previous year							
1988	2.1	3.2	4.9	17.8	..	..	2.1	-24.8
1989	-0.3	-0.9	-2.8	-50.3	..	..	6.8	-28.6
1990	1.3	3.0	7.9	102.2	..	..	-4.8	-14.2
1991	16.5	28.8	5.4	18.8	..	..	-36.4	232.1
1992	23.7	22.3	13.3	22.6	..	..	9.9	95.6
1993	5.8	11.2	-10.7	-24.0	..	..	-2.4	-29.7
1994	7.6	8.2	-1.6	1.9	..	..	14.0	-6.9
1995	-15.1	-15.2	-17.3	-31.4	..	..	-4.4	-39.0
1996	0.1	1.0	-6.4	8.3	..	..	-6.4	5.8
1997	4.4	2.4	25.9	2.6	..	..	14.7	1.1
1998	-2.0	-5.6	-18.2	-48.1	..	..	1.8	-14.4
1999	13.4	5.7	15.9	153.0	321.1	172.9	6.5	33.2
2000	27.8	38.6	8.4	141.4	135.9	-12.5	1.6	-27.7
2001	2.8	2.5	13.5	-57.6	-25.6	1.8	8.9	7.9
2002	-1.5	-4.5	-5.8	-62.3	121.0	16.0	6.5	-1.1
2003	7.8	7.5	30.6	92.6	-26.6	9.0	9.5	-2.5
2004	7.1	3.1	-10.1	25.6	15.8	41.9	13.0	35.4
2005	6.7	5.6	-4.3	7.7	-37.4	14.0	11.2	26.1
2006 <sup>(f)</sup>	4.0	4.0	2.8	56.9	34.9	2.8	1.2	11.8
2007 <sup>(f)</sup>	4.8	3.8	16.2	-28.1	20.7	15.4	0.2	3.1
2008 <sup>(g)</sup>	-3.2	-3.1	-2.6	-1.7	-3.3	-4.9	-2.8	-1.7

**Table 6.4 Total Arrivals by Type of Accommodation**

Calendar Year	Total	Private	Hotel	Motel	Other
1987	37,779	11,062	17,337	9,195	185
1988	38,573	11,163	17,723	9,296	391
1989	38,455	11,795	17,190	9,230	240
1990	38,957	11,413	17,512	9,688	344
1991	45,395	11,900	21,176	11,788	531
1992	56,146	13,464	27,479	14,645	558
1993	59,384	12,994	29,977	14,551	1,862
1994	63,923	14,299	31,544	16,013	2,067
1995	54,239	12,275	23,999	17,229	736
1996	54,286	11,832	25,662	14,294	2,498
1997	56,669	12,852	24,059	16,984	2,774
1998	55,552	13,623	23,375	17,281	1,273
1999	62,970	15,635	26,974	16,820	3,541
2000	80,485	16,137	38,285	14,255	11,808
2001	82,736	17,706	38,644	14,018	12,368
2002	81,473	15,030	36,796	15,238	14,409
2003	87,846	16,561	38,691	17,737	14,857
2004	94,086	23,020	38,083	19,016	13,967
2005	100,360	27,313	37,783	20,861	14,403
2006 <sup>(i)</sup>	104,422	29,088	39,503	22,858	12,973
2007 <sup>(i)</sup>	109,431	30,177	41,082	23,380	14,792
2008 <sup>(ii)</sup>	105,931	29,018	39,832	22,714	14,367
	Percentage Change over previous year				
1988	2.1	0.9	2.2	1.1	111.4
1989	-0.3	5.7	-3.0	-0.7	-38.6
1990	1.3	-3.2	1.9	5.0	43.3
1991	16.5	4.3	20.9	21.7	54.4
1992	23.7	13.1	29.8	24.2	5.1
1993	5.8	-3.5	9.1	-0.6	233.7
1994	7.6	10.0	5.2	10.0	11.0
1995	-15.1	-14.2	-23.9	7.6	-64.4
1996	0.1	-3.6	6.9	-17.0	239.4
1997	4.4	8.6	-6.2	18.8	11.0
1998	-2.0	6.0	-2.8	1.7	-54.1
1999	13.4	14.8	15.4	-2.7	178.2
2000	27.8	3.2	41.9	-15.2	233.5
2001	2.8	9.7	0.9	-1.7	4.7
2002	-1.5	-15.1	-4.8	8.7	16.5
2003	7.8	10.2	5.2	16.4	3.1
2004	7.1	39.0	-1.6	7.2	-6.0
2005	6.7	18.6	-0.8	9.7	3.1
2006 <sup>(i)</sup>	4.0	6.5	4.6	9.6	-9.9
2007 <sup>(i)</sup>	4.8	3.7	4.0	2.3	14.0
2008 <sup>(ii)</sup>	-3.2	-3.8	-3.0	-2.8	-2.9

**Table 6.5 Total Arrivals by Occupational Classification**

Calendar Year	Total	Legislators	Professionals	Technicians	Clerical	Services Workers	Agriculture Workers	Production Workers	Operators	Other Occupation	Persons <sup>1/</sup> not easily classifiable by Occupation
1987	37,779	9,064	3,698	4,590	1,086	3,270	612	846	4,214	3,114	7,285
1988	38,573	10,623	2,992	3,671	1,527	2,243	783	1,090	4,658	3,928	7,058
1989	38,455	11,178	3,020	3,177	1,469	1,876	782	696	4,763	4,463	7,031
1990	38,957	10,964	3,031	3,018	1,580	2,324	834	892	4,885	4,314	7,115
1991	45,395	12,740	4,264	3,419	1,705	2,626	679	961	5,329	5,757	7,915
1992	56,146	15,484	4,855	4,507	1,994	3,096	972	924	6,482	8,551	9,281
1993	59,384	9,218	4,846	6,204	2,039	7,159	845	2,614	6,737	9,746	9,976
1994	63,923	5,624	6,887	3,519	6,712	7,544	998	2,676	1,480	17,252	11,231
1995	54,239	5,421	6,034	2,950	5,577	4,616	803	2,616	933	14,984	10,305
1996	54,286	5,879	9,175	2,926	3,737	4,575	1,018	2,190	1,145	13,034	10,607
1997	56,669	5,698	6,763	4,014	3,599	4,764	580	1,786	1,363	17,821	10,281
1998	55,552	4,441	9,194	1,894	2,672	6,452	549	1,266	849	17,457	10,778
1999	62,970	5,519	8,848	2,773	2,867	12,218	907	1,230	730	16,179	11,699
2000	80,485	8,015	16,536	3,887	7,079	5,964	1,133	3,295	1,068	16,386	17,122
2001	82,736	9,084	15,731	9,900	6,796	4,088	1,167	3,413	750	7,193	24,614
2002	81,473	9,592	11,358	15,499	6,658	4,112	907	3,148	705	4,330	25,164
2003	87,846	9,879	9,692	17,130	8,433	5,280	1,934	3,168	768	4,117	27,445
2004	94,086	11,596	8,851	17,797	9,934	4,710	2,265	4,176	708	3,127	30,922
2005	100,360	12,469	11,361	19,204	8,965	4,744	1,877	4,608	782	3,368	32,982
2006 <sup>(f)</sup>	104,422	13,244	9,711	19,901	11,360	4,698	1,713	5,679	905	2,830	34,381
2007 <sup>(f)</sup>	109,431	13,304	13,730	17,319	10,555	5,747	1,711	6,145	1,366	4,892	34,662
2008 <sup>(p)</sup>	105,931	12,879	13,292	16,766	10,218	5,564	1,656	5,949	1,322	4,736	33,549
Percentage change over previous year											
1988	2.1	17.2	-19.1	-20.0	40.6	-31.4	27.9	28.8	10.5	26.1	-3.1
1989	-0.3	5.2	0.9	-13.5	-3.8	-16.4	-0.1	-36.1	2.3	13.6	-0.4
1990	1.3	-1.9	0.4	-5.0	7.6	23.9	6.6	28.2	2.6	-3.3	1.2
1991	16.5	16.2	40.7	13.3	7.9	13.0	-18.6	7.7	9.1	33.4	11.2
1992	23.7	21.5	13.9	31.8	17.0	17.9	43.2	-3.9	21.6	48.5	17.3
1993	5.8	-40.5	-0.2	37.7	2.3	131.2	-13.1	182.9	3.9	14.0	7.5
1994	7.6	-39.0	42.1	-43.3	229.2	5.4	18.1	2.4	-78.0	77.0	12.6
1995	-15.1	-3.6	-12.4	-16.2	-16.9	-38.8	-19.5	-2.2	-37.0	-13.1	-8.2
1996	0.1	8.4	52.1	-0.8	-33.0	-0.9	26.8	-16.3	22.7	-13.0	2.9
1997	4.4	-3.1	-26.3	37.2	-3.7	4.1	-43.0	-18.4	19.0	36.7	-3.1
1998	-2.0	-22.1	35.9	-52.8	-25.8	35.4	-5.3	-29.1	-37.7	-2.0	4.8
1999	13.4	24.3	-3.8	46.4	7.3	89.4	65.2	-2.8	-14.0	-7.3	8.5
2000	27.8	45.2	86.9	40.2	146.9	-51.2	24.9	167.9	46.3	1.3	46.4
2001	2.8	13.3	-4.9	154.7	-4.0	-31.5	3.0	3.6	-29.8	-56.1	43.8
2002	-1.5	5.6	-27.8	56.6	-2.0	0.6	-22.3	-7.8	-6.0	-39.8	2.2
2003	7.8	3.0	-14.7	10.5	26.7	28.4	113.2	0.6	8.9	-4.9	9.1
2004	7.1	17.4	-8.7	3.9	17.8	-10.8	17.1	31.8	-7.8	-24.0	12.7
2005	6.7	7.5	28.4	7.9	-9.8	0.7	-17.1	10.3	10.5	7.7	6.7
2006 <sup>(f)</sup>	4.0	6.2	-14.5	3.6	26.7	-1.0	-8.7	23.2	15.7	-16.0	4.2
2007 <sup>(f)</sup>	4.8	0.5	41.4	-13.0	-7.1	22.3	-0.1	8.2	50.9	72.9	0.8
2008 <sup>(p)</sup>	-3.2	-3.2	-3.2	-3.2	-3.2	-3.2	-3.2	-3.2	-3.2	-3.2	-3.2

Note: <sup>1/</sup> Included in this category are those persons less than 15 years of age, retirees and those that cannot be easily classifiable by occupation. Prior to 1999 these persons were included in the category "Other Occupation".

**Table 6.6 Total Arrivals by Age Grouping**

Calendar Year	Total	0-14	15-24	25-34	35-44	45-59	60+
1987	37,779	3,954	5,310	8,857	7,216	7,463	4,979
1988	38,573	3,929	5,634	8,948	7,371	8,014	4,677
1989	38,455	4,077	5,498	9,025	7,372	8,067	4,416
1990	38,957	4,000	5,083	9,110	7,645	8,463	4,656
1991	45,395	4,132	5,794	10,972	8,641	10,201	5,655
1992	56,146	4,690	6,343	13,636	10,854	13,761	6,862
1993	59,384	4,816	6,506	14,623	10,659	15,067	7,713
1994	63,923	5,407	6,431	15,417	11,516	16,447	8,705
1995	54,239	4,719	5,561	13,022	9,492	14,237	7,208
1996	54,286	4,391	5,113	12,943	9,448	14,118	8,273
1997	56,669	4,544	6,286	12,888	9,563	14,813	8,575
1998	55,552	4,649	6,366	12,641	8,991	14,289	8,616
1999	62,970	5,362	7,720	14,319	10,565	15,837	9,167
2000	80,485	6,777	9,653	18,792	13,615	20,313	11,335
2001	82,736	7,239	10,112	19,169	13,858	20,996	11,362
2002	81,473	7,860	9,361	18,503	14,368	21,076	10,305
2003	87,846	8,273	10,819	20,183	15,379	21,975	11,217
2004	94,086	9,593	11,557	20,375	16,543	23,527	12,491
2005	100,360	11,506	12,124	21,474	17,984	24,646	12,626
2006 <sup>(f)</sup>	104,422	12,013	12,161	22,021	18,540	25,569	14,118
2007 <sup>(f)</sup>	109,431	12,981	12,935	22,093	19,577	27,203	14,642
2008 <sup>(p)</sup>	105,931	12,566	12,521	21,386	18,951	26,333	14,174
Percentage Composition							
1988	100.0	10.2	14.6	23.2	19.1	20.8	12.1
1989	100.0	10.6	14.3	23.5	19.2	21.0	11.5
1990	100.0	10.3	13.0	23.4	19.6	21.7	12.0
1991	100.0	9.1	12.8	24.2	19.0	22.5	12.5
1992	100.0	8.4	11.3	24.3	19.3	24.5	12.2
1993	100.0	8.1	11.0	24.6	17.9	25.4	13.0
1994	100.0	8.5	10.1	24.1	18.0	25.7	13.6
1995	100.0	8.7	10.3	24.0	17.5	26.2	13.3
1996	100.0	8.1	9.4	23.8	17.4	26.0	15.2
1997	100.0	8.0	11.1	22.7	16.9	26.1	15.1
1998	100.0	8.4	11.5	22.8	16.2	25.7	15.5
1999	100.0	8.5	12.3	22.7	16.8	25.2	14.6
2000	100.0	8.4	12.0	23.3	16.9	25.2	14.1
2001	100.0	8.7	12.2	23.2	16.7	25.4	13.7
2002	100.0	9.6	11.5	22.7	17.6	25.9	12.6
2003	100.0	9.4	12.3	23.0	17.5	25.0	12.8
2004	100.0	10.2	12.3	21.7	17.6	25.0	13.3
2005	100.0	11.5	12.1	21.4	17.9	24.6	12.6
2006 <sup>(f)</sup>	100.0	11.5	11.6	21.1	17.8	24.5	13.5
2007 <sup>(f)</sup>	100.0	11.9	11.8	20.2	17.9	24.9	13.4
2008 <sup>(p)</sup>	100.0	11.9	11.8	20.2	17.9	24.9	13.4

**Table 6.7 Hotel /Motel Occupancy Rates**

Calendar Year	Room Nights			Bed Nights		
	Available	Occupied	Occupancy Rate(%)	Available	Occupied	Occupancy Rate(%)
1987	149,160	94,494	63.4	348,989	272,965	78.2
1988	161,240	81,247	50.4	340,801	159,631	46.8
1989	175,529	98,750	56.3	383,024	204,504	53.4
1990	181,446	110,316	60.8	452,305	272,965	60.3
1991	204,650	134,288	65.6	477,672	287,330	60.2
1992	214,276	151,161	70.5	544,651	299,279	54.9
1993	200,079	140,923	70.4	507,086	289,810	57.2
1994	204,829	139,110	67.9	491,844	295,457	60.1
1995	245,323	139,835	57.0	623,110	313,545	50.3
1996	270,668	155,588	57.5	714,075	351,063	49.2
1997	256,833	157,083	61.2	692,017	373,749	54.0
1998	276,140	161,316	58.4	726,088	384,075	52.9
1999	283,449	174,717	61.6	776,106	473,176	61.0
2000	286,537	218,768	76.3	798,062	547,182	68.6
2001	316,762	225,244	71.1	856,693	502,957	58.7
2002	331,892	209,397	63.1	900,880	470,979	52.3
2003	338,296	204,454	60.4	899,731	475,883	52.9
2004	375,167	207,749	55.4	1,031,048	458,599	44.5
2005	363,867	230,319	63.3	1,011,947	548,915	54.2
2006	348,459	260,754	74.8	1,040,199	703,556	67.6
2007 <sup>(f)</sup>	428,518	225,681	52.7	1,122,218	521,516	46.5
2008 <sup>(b)</sup>	424,515	226,354	53.3	1,141,218	540,495	47.4
Percentage change over the previous year						
1988	8.1	-14.0	-20.5	-2.3	-41.5	-40.1
1989	8.9	21.5	11.6	12.4	28.1	14.0
1990	3.4	11.7	8.1	18.1	33.5	13.0
1991	12.8	21.7	7.9	5.6	5.3	-0.3
1992	4.7	12.6	7.5	14.0	4.2	-8.7
1993	-6.6	-6.8	-0.2	-6.9	-3.2	4.0
1994	2.4	-1.3	-3.6	-3.0	1.9	5.1
1995	19.8	0.5	-16.1	26.7	6.1	-16.2
1996	10.3	11.3	0.8	14.6	12.0	-2.3
1997	-5.1	1.0	6.4	-3.1	6.5	9.9
1998	7.5	2.7	-4.5	4.9	2.8	-2.1
1999	2.6	8.3	5.5	6.9	23.2	15.3
2000	1.1	25.2	23.9	2.8	15.6	12.5
2001	10.5	3.0	-6.9	7.3	-8.1	-14.4
2002	4.8	-7.0	-11.3	5.2	-6.4	-11.0
2003	1.9	-2.4	-4.2	-0.1	1.0	1.2
2004	10.9	1.6	-8.4	14.6	-3.6	-15.9
2005	-3.0	10.9	14.3	-1.9	19.7	22.0
2006	-4.2	13.2	18.2	2.8	28.2	24.7
2007 <sup>(f)</sup>	23.0	-13.5	-29.6	7.9	-25.9	-31.3
2008 <sup>(b)</sup>	-0.9	0.3	1.2	1.7	3.6	1.9

**Table 6.8 Number of Hotels and Motels with Number of Employees**

Calendar Year	Number of rooms	Number of beds	C Is Resident Employees			Expatriate Employees		
			Total	Males	Females	Total	Males	Females
1987	409	956	279	108	171	15	11	4
1988	442	934	244	87	157	20	15	5
1989	481	1,049	220	84	136	26	20	6
1990	497	1,239	258	119	139	22	17	5
1991	561	1,309	269	108	161	21	16	5
1992	587	1,492	366	123	243	22	16	6
1993	548	1,389	377	147	230	21	15	6
1994	561	1,348	400	137	263	26	17	9
1995	672	1,707	427	151	276	33	21	12
1996	742	1,956	405	149	256	29	18	11
1997	704	1,896	407	161	246	17	12	5
1998	757	1,989	387	159	228	17	13	4
1999	777	2,126	423	172	251	21	14	7
2000	785	2,186	493	196	297	33	20	13
2001	868	2,347	579	215	364	62	37	25
2002	909	2,468	574	197	376	68	36	31
2003	927	2,465	548	183	366	73	45	28
2004	1,028	2,825	563	179	384	94	53	41
2005	997	2,772	578	183	395	113	61	52
2006	1,069	2,698	539	188	351	152	77	75
2007 <sup>(i)</sup>	1,191	3,143	534	179	355	173	91	82
2008 <sup>(ii)</sup>	1,173	3,138	542	186	356	175	92	83
Percentage change over the previous year								
1988	8.1	-2.3	-12.5	-19.4	-8.2	33.3	36.4	25.0
1989	8.9	12.4	-9.8	-3.4	-13.4	30.0	33.3	20.0
1990	3.4	18.1	17.3	41.7	2.2	-15.4	-15.0	-16.7
1991	12.8	5.6	4.3	-9.2	15.8	-4.5	-5.9	0.0
1992	4.7	14.0	36.1	13.9	50.9	4.8	0.0	20.0
1993	-6.6	-6.9	3.0	19.5	-5.3	-4.5	-6.3	0.0
1994	2.4	-3.0	6.1	-6.8	14.3	23.8	13.3	50.0
1995	19.8	26.7	6.7	10.2	4.9	26.9	23.5	33.3
1996	10.3	14.6	-5.2	-1.3	-7.2	-12.1	-14.3	-8.3
1997	-5.1	-3.1	0.5	8.1	-3.9	-41.4	-33.3	-54.5
1998	7.5	4.9	-4.9	-1.2	-7.3	0.0	8.3	-20.0
1999	2.6	6.9	9.3	8.2	10.1	23.5	7.7	75.0
2000	1.1	2.8	16.6	14.2	18.3	57.1	42.3	86.9
2001	10.5	7.3	17.4	9.4	22.6	88.9	87.4	91.1
2002	4.8	5.2	-0.9	-8.2	3.4	8.3	-2.5	24.3
2003	1.9	-0.1	-4.4	-7.4	-2.9	7.8	22.2	-9.1
2004	10.9	14.6	2.7	-1.9	5.1	29.2	19.1	45.1
2005	-3.0	-1.9	2.7	2.2	2.9	20.2	15.1	26.8
2006	7.2	-2.7	-6.7	2.7	-11.1	34.5	26.2	44.2
2007 <sup>(i)</sup>	11.4	16.5	-0.9	-4.8	1.1	13.8	18.2	9.3
2008 <sup>(ii)</sup>	-1.5	-0.2	1.5	3.9	0.3	1.2	1.1	1.2